

Society of Musical Arts

Stephen Culbertson, Music Director

Concert Program



Sunday, October 30, 2016

4:00 P.M.

**Maplewood Middle School
7 Burnet Street
Maplewood, New Jersey**





This program is made possible in part by funds from the New Jersey State Council on the Arts/Department of State, a Partner Agency of the National Endowment for the Arts and administered by the Essex County Division of Cultural and Historic Affairs.



SOMA gratefully acknowledges our grant from Essex County DCHA in the amount of \$1,220 for the year 2016.

Orchestra October 2016

Stephen Culbertson, Music Director

FIRST VIOLIN

Susan Heerema*
Dan Daniels
Faye Darack
Warren Hansen
Heather Longden
Naomi Shapiro
Herb Steiner
Len Tobias
Diane Wade
Richard Waldmann

SECOND VIOLIN

Lillian Kessler*
Eugene Ehrlich
Jim Jordan
Shirley Li
Linda McNamara
Luba Schnable
Michael Schneider
Emilie Schwartz

VIOLA

Roland Hutchinson*
Harry Berkshire
Peggy LaVake
Janet Poland
Peggy Reynolds
Loiuse Stine-Thomas

CELLO

James Celestino*
Arnie Feldman
Megan Doherty
Helen Kong
Beth Platte
Jameson Platte
Florin Sutton

BASS

Gary Hersh*
James Buchanan
Matthew Hintz
Robert Whiteley

FLUTE

Laura Paparatto*
Gail Berkshire

PICCOLO

Ashlen Udell*

OBOE

Richard Franke*
Alice Marcus

ENGLISH HORN

John Cannizzarro*

CLARINET

Donna Dixon*
Theresa Hartman

BASS CLARINET

Joel Kolk*

BASSOON

Karen Kelland*
Jessica Frame

CONTRABASSOON

Andrew Pecota

FRENCH HORN

Paul Erickson*
Dana Bassett
Linda Lovstad
Libby Schwartz

TRUMPET

George Sabel*
Ray Aspinwall
Robert Ventimiglia

TROMBONE

Jay Shanman*
John Vitkovsky
Phil Cohen

TUBA

David Olson*

HARP

Patricia Turse*

CELESTA

Evan Schwartzman*

PERCUSSION

Joe Whitfield*
Jasmine Krempels
Brant Roberts
Rebecca Waitkus

* Principal

SOMA is an affiliate of the



NJFMC Chapter

The Rehearsal Club of Montclair

announces a song recital by soprano

Natalie Megules

Wednesday, November 16, 2016 at 11 am
in Jersey City, free of charge



for details on venue and directions contact:

Laura Papatatto: lpapatatto@gmail.com 973 433-0244

Clarissa Schoch: schoch.clarissa@gmail.com 973 777-6464

or email orchestrasoma@gmail.com

Ask about joining our club!

not just music

In addition to our award winning
Sheet Music and Music Book publishing,
we also offer:

Short-run Digital Printing

- ➔ Booklets
- ➔ Pamphlets
- ➔ Flyers
- ➔ Posters

B&W and Color
Standard sizes up to 13" x 19"

SUBITO MUSIC
CORPORATION

60 Depot Street, Verona, NJ 07044
(next to West Essex Building Supply)

973-857-3440

WWW.SUBITOMUSIC.COM

Society of Musical Arts

Stephen Culbertson, Conductor

**Sunday, October 30, 2016
4:00 pm**

PLEASE TURN OFF ALL ELECTRONIC DEVICES

“To Liberty and Justice”

**Festival Overture on the American National Air
“The Star Spangled Banner “**

Dudley Buck

Finlandia

*Andante sostenuto
Alegretto moderato*

Jean Sibelius

Lincoln Portrait

Aaron Copland

The Honorable Vic DeLuca, narrator

Intermission

Symphony No. 5 in C Minor, Op. 67

*Allegro con brio
Andante con moto
Allegro
Allegro*

Ludwig van Beethoven

Next concert dates :

March 19, 2017 June 4, 2017

www.soma.ar88.net
Like us on Facebook!

Program Notes

by Stephen Culbertson

Dudley Buck (1839-1909): Festival Overture on the American National Air *The Star-Spangled Banner*

This work began as Concert Variations for Organ, then was orchestrated in 1879 and performed that year to celebrate Independence Day. Note the word “Air” in the title; The Star-Spangled Banner would not become our National Anthem until 1931.

Buck was an important figure in America in the late 19th Century (some obituaries called him *the most important*). He was a leader in developing our choral tradition as well as being a concert organist and faculty member of New England Conservatory.

On cue from the stage, please stand and sing!

O say can you see, by the dawn's early light,
What so proudly we hailed at the twilight's last gleaming,
Whose broad stripes and bright stars through the perilous fight,
O'er the ramparts we watched, were so gallantly streaming?
And the rockets' red glare, the bombs bursting in air,
Gave proof through the night that our flag was still there;
O say does that star-spangled banner yet wave
O'er the land of the free and the home of the brave?

Jean Sibelius (1865-1957): Finlandia, Op. 26, No. 7

From 1809-1917, Finland was an “autonomous” Grand Duchy in the Russian Empire. And during this time, Finland's autonomy allowed a nationalist movement, resulting in the exclusively spoken Finnish language being developed into a modern written language. The 1835 national epic *Kalevala* (which has striking structural similarities to our *Song of Hiawatha*) was the first written work in Finnish. Sibelius was one of the leaders of the Finnish nationalist movement, which also included a poet, a painter and other cultural figures. By 1899, the relationship with Russia had soured to the point where *Päivälehti* (Today's Paper) was banned for three months. Under the cover of a raising money to fund the newspaper-men's pension fund, Sibelius wrote

music for a set of historical tableaux that were first presented at the Swedish Theater in Helsinki on November 4. The last of these, *Finland Awakes!* didn't cause much of a stir at the time. Still, the title was deemed too inciting for the Russian censors; so a month later the music was performed in a symphony concert with the title simply *Finale* (of the set of tableaux). Though it is not based on specific folk melodies, it immediately captured the essence and character of Finnish nationalism. The Helsinki Philharmonic performed it (with a new title, *Finlandia*, suggested by a patron of Sibelius) at the Paris World Exhibition in early 1900. Ever since, the music has been a source of inspiration for Finns and others throughout the world.

Aaron Copland (1900-1991): Lincoln Portrait

Aaron Copland writes:

It was in January, 1942, that Andre Kostelanetz suggested the idea of my writing a musical portrait of a great American. He put teeth into the proposal by offering to commission such a piece, and to play it extensively. My first thought was to do a portrait of Walt Whitman, the patron poet of all American composers. But when Mr. Kostelanetz explained that the series of portraits he was planning already included a literary figure, I was persuaded to change it to a statesman. From that moment on the choice of Lincoln as my subject seemed inevitable.

On discussing my choice with Virgil Thomson [who wrote a whole series of "musical portraits," where the subject would sit in front of him and he would compose a piece of music, as if he was a painter], he amiably pointed out that no composer could possibly hope to match in musical terms the stature of so eminent a figure as that of Lincoln. Of course, he was quite right. But secretly I was hoping to avoid the difficulty by doing a portrait in which the sitter himself might speak. With the voice of Lincoln to help me I was ready to risk the impossible.

The letters and speeches of Lincoln supplied the text. It was a comparatively simple matter to choose a few excerpts that seemed particularly apposite to our own situation today. [a month after Pearl Harbor] I avoided the temptation to use only well-known passages, permitting myself the luxury of quoting only once from a world-famous speech. The order and arrangement of the selections are my own.

The first sketches were made in February, and the portrait finished on April 16th. The orchestra [sic] was completed a few weeks later. I worked with musical materials of my own, with the exception of two songs of the period: the famous *Camptown Races*, and a ballad that was first published in 1840 under the title *The Pesky Serpent*, but is better known today as *Springfield Mountain*. In neither case is the treatment a literal one. The tunes are used freely, in the manner of my use of cowboy songs in *Billy the Kid*.

The composition is roughly divided into three main sections. In the opening section I wanted to suggest something of the mysterious sense of fatality that surrounds Lincoln's personality. Also, near the end of that section, something of his gentleness and simplicity of spirit. The quick middle section briefly sketches in the background of the times he lived in. This merges into the concluding section where my sole purpose was to draw a simple but impressive frame about the words of Lincoln himself.

A Lincoln Portrait is dedicated to Andre Kostelanetz.

*An explanatory note by Andre Kostelanetz
(from the first performance of the set):*

This Gallery of Musical Portraits is a direct result of the momentous events of December, 1941. In the weeks that followed our entrance into the war, I gave a great deal of thought to the manner in which music could be employed to mirror the magnificent spirit of our country.

The greatness of a nation is expressed through its people, and those people who have achieved greatness are the logical subjects for a series of musical portraits.

I discussed the idea with three of our leading composers, and the result was *A Lincoln Portrait* by Aaron Copland, the *Portrait for Orchestra of Mark Twain*, by Jerome Kern, and the portrait of Mayor Fiorello H. LaGuardia, the fiery battler for honest civic government, by Virgil Thomson.

The qualities of courage, dignity, strength, simplicity, and humor, which are so characteristic of the American people are well represented in these three outstanding Americans.

Ludwig van Beethoven (1756-1827): Symphony No. 5, Op. 67

Although perhaps not as “radical” as his *Eroica* Symphony, Beethoven’s Fifth Symphony, along with the *Eroica* and Ninth, remains a pillar of Western music. As early as 1810 (only 2 years after a less-than-ideal premiere; more about that below), the poet and critic E.T.A. Hoffmann described the symphony as “one of the most important works of the time.”

Getting back to the premiere, it took place at what we would call a marathon concert at Theater an der Wien in Vienna, directed by Beethoven. Composers at the time made much of their living putting on such concerts, hiring (or begging) musicians and charging admission to the audiences, who couldn’t wait to hear what this crazy guy was going to come up with next. The concert lasted over 4 hours, was presented after one rehearsal, and the Fifth didn’t even get top billing or a prominent spot in the program, which consisted of:

1. Symphony No. 6
2. *Ah, Perfido*, aria for soprano and orchestra
3. *Gloria* from Mass in C
4. Piano Concerto No. 4 (pianist and conductor: Beethoven)
- intermission
5. Symphony No. 5
6. *Sanctus* and *Benedictus* from Mass in C
7. Piano improvisation by Beethoven (no doubt on themes suggested by the audience)
8. *Choral Fantasy*

Almost immediately after the first publication in 1810, the Fifth became a “standard”. The New York Philharmonic played it at its first concert in 1842, as did the National Symphony in 1931.

This symphony (or at least the opening motive) is arguably the most iconic piece of Western classical music in our culture. Volumes have been written about it, ranging from an alleged description by Beethoven’s student calling the opening “Fate knocking at the door” to the “V for Victory” symbol used during WWII. In the context of our program today, the central message of the work is struggle and triumph. The British musicologist John Eliot Gardiner has discovered that many of the themes Beethoven adapted for the symphony were originally songs from the French Revolution. Indeed, in the last movement, the whole orchestra is singing a hymn to liberty.

Victor De Luca
Mayor, Township of Maplewood

Mayor De Luca is serving his sixth, three-year term on the Maplewood Township Committee. For eleven of his 17 years in office, he has been elected as Mayor by his Township Committee colleagues.

He is a founding board member of NJ Citizen Action and has served on the board since 1982. He also is on the boards of the Springfield Avenue Partnership and Downtown New Jersey.

De Luca is the former President of the Jessie Smith Noyes Foundation, which supports organizations working to change environmental, social, economic and political conditions to bring about a more just, equitable and sustainable world. He served on the boards of the Environmental Grantmakers Association, Philanthropy New York, and the Funders Network for Population, Reproductive Health and Rights.

A former VISTA Volunteer, De Luca was the director of the Ironbound Community Corporation, a Newark community-based organization.

State Repertory Opera

of New Jersey

Dita Delman, Artistic Director

Upcoming Concert and Dinner Party

Van Vleck House & Gardens

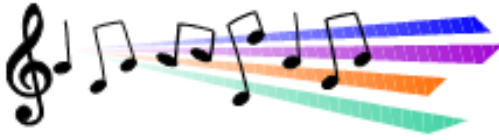
21 Van Vleck Street, Montclair, NJ

Sunday, April 23, 2017 at 4:00 PM

www.njsro.com

ddelman9@gmail.com

Tickets: [973.763.7969](tel:973.763.7969)



Music Maker

Music Engraving

Gail G. Berkshire
973-839-1773



Hear more great music with the
South Orange Symphony
mark your calendar for our 68th season:

November 6, 2016

February 12, 2017

May 13, 2017

with Conductor Susan Haig

South Orange Middle School's Sterling Auditorium
70 North Ridgewood Road, South Orange, NJ

www.sosymphony.org  Like us on Facebook! or call 973 376- 6349 for more info

Stephen Culbertson

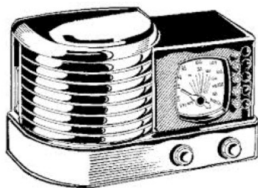
Conductor

Stephen Culbertson, Music Director for the Society of Musical Arts, has conducted over 35 orchestras, opera productions, and ballet companies, ranging from major to community level, in Europe and the United States. Major engagements include a Spoleto USA debut on the 20th-Century Perspective Series and a new production of Prokofiev's Cinderella for the San Joaquin Ballet in California. In recent seasons, Culbertson has appeared with the Montclair Chamber Orchestra and Orchestra Society of Philadelphia. He has served as Music Director of the Sussex County (New Jersey) Community Orchestra and Associate Conductor of the Bergen (New Jersey) Philharmonic Orchestra. With the latter two orchestras, he conceived and conducted a series of family concerts for the community to great acclaim. He served on the board of Unity Concerts of NJ and was its Artistic Director for the 2002-3 season. Culbertson's most recent activities include leading the New Jersey Reading Orchestra and serving as interim Music Director at the Presbyterian Church of Upper Montclair.

After graduating from University of the Pacific in his native California, Culbertson was awarded a scholarship to study at the Sibelius Academy in Helsinki (Finland) with famed conducting teacher Jorma Panula. During his five-year stay, he studied the works of Sibelius with the composer's son-in-law, Jussi Jalas, and conducted most of Finland's major ensembles: The Finnish National Opera, the Helsinki Philharmonic, The Finnish Radio Orchestra, The Vaasa and Tampere Operas, and the Oulu Philharmonic. In addition to conducting, he gained valuable experience (not to mention much-needed income) by singing in a number of professional choruses, including the Finnish Radio Choir, Savonlinna Opera Chorus and the Helsinki Festival production of Britten's Church Parables.

Culbertson introduced Finnish audiences to works by Copland, S.R. Beckler, John Forsman and many others. He introduced local listeners to American music by writing a six-hour series of radio programs entitled A History of American Music for the Finnish Broadcast Corporation. As a guest conductor, Culbertson has worked for the Netherlands Opera and appeared in Czechoslovakia (with the Košice State Philharmonic), Italy, Hungary, and England. Culbertson has been a strong advocate of American music as both a conductor and a publisher. In 1993, he co-founded Subito Music Publishing and became its President in 1997. From 1987 to 1992, he was director of the rental and publications departments for G. Schirmer, Inc., where he supervised the music preparation of, among others, John Corigliano's opera *The Ghosts of Versailles* (for the Metropolitan Opera) and *Symphony No. 1* (for the Chicago Symphony).

See and hear old radios!



The New Jersey Antique Radio Club's

Radio Technology Museum

At InfoAge

"Down the Shore" near Belmar

Open Wed, Sat, and Sun 1-5 PM - *Admission is Free* -

www.rtm.ar88.net

Laura Papparatto
Flutist

108 Holly Lane
Cedar Grove, NJ 07009

973.433.0244

lpapparatto@gmail.com

Performance Instruction
Flute Piccolo Recorder

Membership 2015 – 2016

We thank our members, whose gracious support makes it possible to bring you concerts of fine music, free of charge and open to the public.

Conductor's Circle: \$1,000 and up

Investors Bank
NJ State Council on the Arts
(Essex County administrator)
Laura & Sam Papparatto
(matching BNY Mellon, Pershing)
Paul Erickson
(American Endowment
Foundation match)

Platinum: \$500-\$999

Evan Schwartzman and
Sue Kasdon

Gold: \$250-\$499

Sheila Appel
memory of Ed Appel
Gail Berkshire
Bernie Friedland
Alice Marcus
A. Michael Noll
Radio Technology Museum
Peggy Reynolds
Libby Schwartz

Silver: \$100-\$249

Sandra & John Abeel
Louis & Talda Alfonso
Innes & Chris Borstel
Kathleen Comini
David Conrad
Dan Daniels
Dita Delman
Dr. & Mrs. Steven DeVito
Arnold Feldman
Richard Franke
Jay & Angela Gerken
John & Judith Grey
Michele & James Hubley

Peggy LaVake
NJ State Repertory Opera
Irwin & Blossom Primer
Rehearsal Club and
Montclair Music Club
Aleza & Joe Rosenberg
Len Tobias
Jeanine Wilson
Kirk Woodward
Shirley Li & Mark Yolleck

Bronze: \$50-\$99

Anonymous
Alice & Richard Barron
memory of Freddy Garnett
Dr. Eugene & Iris Ehrlich
Kelley Fahey
Steven & Sally Janett
honor of Steve Culbertson
Jim Jordan
Richard Lyon
Linda & Paul McNamara
Benjamin & Ruth Perlmutter
Dr. Laura Rogers
William T. Rogers Esq.
Rehearsal Club of Montclair
Dorothy & Jim Sherwood
Sandra A. Skea
Herb Steiner
TD Bank (Affinity Program)
Jeanine Wilson
Marsha Ann Zimmerman

Friends: up to \$49

Sue Aughenbaugh
loving memory of Don Smith
Barbara Bivin
Lillian Brown
Fred L. Cohen
Michael Friedman

Membership 2015 – 2016

Friends: (cont.)

Matthew Hintz
Frank F. Katz
Karen Lundry
Shirley & Joseph Madonna
Patricia & Emil Neu
Odarka Polansky
Daniel Ramer
memory of Ed Appel
Naomi Shapiro
Susan & David Solomon
memory of Ed Appel
Ernestine Turkel



Care2Share AFFINITY PROGRAM

support

Giving Back to Make a Difference



The Society of Musical Arts

gratefully acknowledges a grant from **Investors Bank** in the amount of \$1,500.

Do you have a checking or savings account at Investors? Through their **Care2Share Affinity Program**, you can help SOMA even more by linking your eligible account to ours, at no cost to you. We need a minimum of only 10 (ten) linked accounts to receive a minimum quarterly contribution of \$75, and we're almost there!

Pick up an application at our reception table today, or visit www.myinvestorsbank.com/care2share.

Society of Musical Arts who we are

The Society of Musical Arts (SOMA) was founded in 1981 by Dr. Samuel Applebaum, New Jersey's world famous master teacher of the violin. We are continuing Dr. Applebaum's objectives to provide an opportunity for both amateur and professional string musicians to play baroque and classical music in a chamber orchestra and to present free public concerts with multi-generational appeal to the residents of Essex and surrounding counties.

BOARD OF DIRECTORS

OFFICERS

Laura Papatatto
President

Peggy Reynolds
Vice President
Treasurer

Innes Borstel
Secretary
Publicity

BOARD MEMBERS

Sheila Appel
Bernard Friedland
Blossom Primer
Sam Papatatto
Libby Schwartz

TECH SUPPORT

Al Klase

WWW.SOMA.AR88.net

Contact us:
phone: (973) 433-0244
email: SOMA@ar88.net

We would welcome more board members! Call us!

TELEPHONE:
(973) 675-4544

Celebrating 35 years



David Conrad
VIOLINS BOWED INSTRUMENTS
ARTISTIC RESTORATION
REPAIRS ACCESSORIES SALES



"OLDE WORLD"
SHOPPE

18 Scotland Road
Orange, N.J. 07050

**Special Thanks to our
Stage Management Committee**

Jim Jordan and Shirley Li

For moving us along!

STEVEN J. DEVITO, D.M.D.

Dentist



**723 Kennedy Boulevard
North Bergen, NJ 07047**

Off-street parking at 1207 7th Street

TEL: (201) 867-4982

FAX: (201) 867-7907

Support our Advertisers!

SOMA salutes

Platinum supporter:

Investors Bank

Silver supporters:

Gail Berkshire

Dr. Steven J. DeVito

The Montclair Music Club and

The Rehearsal Club of Montclair

Laura Papparatto, flute instruction, performance

The Radio Technology Museum at InfoAge

State Repertory Opera of New Jersey

Subito Music Corporation

Bronze Supporters:

David Conrad

Cynthia Mizeski

South Orange Symphony

Thank you!



CYNTHIA A. MIZESKI

Pianist - Organist

Available for Coaching and
Accompanying Singers and
Instrumentalists for
Studio and Recital Work

Call: 973 427 5433
201-790-3894 (cell)

Become a Member!

Your support is very important to us. With your donation we will be able to continue offering our fine concerts free to the public. Young families will be able to share in listening to live classical music without the stress of costly concert tickets. We urge everyone to join us or continue their membership in the **Society of Musical Arts** by making a tax-deductible contribution at the giving levels suggested below. As a donor, your name will be listed in our program.

Thanks for helping us keep alive Dr. Applebaum's dream of live classical music by and for New Jersey residents!

Laura Papparatto, President



*Please mail this application along with your check to:
SOMA, 110 Gifford Ave, Jersey City, NJ 07304*

Name: _____

Address: _____

Email: _____

Friends (up to \$49), Bronze (\$50-\$99), Silver (\$100-\$249)

Gold (\$250-\$499), Platinum (\$500-\$999)

Conductors Circle (\$1,000 & up)

Contributions can also be made via PayPal at our website

WWW.SOMA.AR88.NET

(click on the donate button at the bottom)

or drop in the fish bowl at the concert