



# Matters

M A G A Z I N E

*Featuring Local People, Places and Things that Matter to Maplewood and South Orange Since 1990*

**Spring 2016**





On May 16, Maplewood Library will host Dale Rusakoff, author of *The Prize: Who's in Charge of America's Schools?*

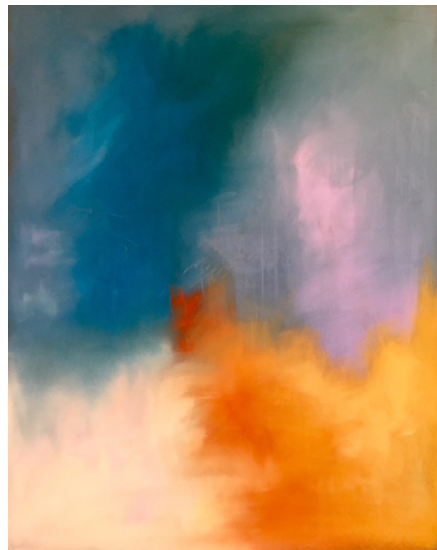
Violinist Ashley Horne will perform with the Metropolitan Orchestra of New Jersey at its spring concert on May 22.

by Manuel de Falla (*La Vida Breve*), Edouard Lalo (*Symphonie Espagnol*, featuring Juilliard School graduate violinist, Ashley Horne) and Georges Bizet (*Carmen Suites No.1 and No. 2*). Maplewood resident James Buchanan is a member of the orchestra. For details call 973-632-3347 or visit [metropolitanorchestra.org](http://metropolitanorchestra.org).

**South Orange Rotary Club** is hosting a blood drive on May 23 from 2:30 p.m. to 7 p.m. at The Baird, 5 Mead Street, South Orange. Please bring ID, and eat before donating. Walk-ins are welcome or you can make an appointment by calling 800-933-2566 or visiting [nybloodcenter.org](http://nybloodcenter.org).

Local artist Tara O'Leary and Cathy Roma, writer of the blog [whatsouldimakefor.com](http://whatsouldimakefor.com) will be co-hosting an event called **tART** in Maplewood on June 4 to celebrate their shared passion for art and food. The event will be held at O'Leary's studio, 155 Maplewood Avenue, Maplewood and will be open to the public between 12 and 4 p.m. and later that evening at 7 p.m. O'Leary will be introducing her new collection, *The Reiki Series* and Roma will be demonstrating how to prepare seasonal desserts. For details visit [taraoleary.com](http://taraoleary.com) or [whatsouldimakefor.com](http://whatsouldimakefor.com).

**The Society of Musical Arts Orchestra** presents a free concert on June 5 at 4 p.m. at Maplewood Middle School, 7 Burnet Street, Maplewood, on



Local artist Tara O'Leary and food blogger Cathy Roma will be co-hosting an event called **tART** to celebrate their shared passion for food and art in Maplewood on June 4.

# SOMA's #1 Agent\*



## Spring Collection 2016



**For Top Results & Best Marketing Call**

**Robert Northfield**

Broker/Sales Associate

**973-761-4100**

Office Direct: 973-544-8001

[Robert@RobertNorthfield.com](mailto:Robert@RobertNorthfield.com)

[www.RobertNorthfield.com](http://www.RobertNorthfield.com)



**KW MID-TOWN DIRECT REALTY**  
**KELLERWILLIAMS**

The Robert Northfield Team is committed to providing the best service. **Call TODAY** if you are selling and/or buying.

\*2015 Production- KW MTD. May not reflect all sales. An Equal Opportunity, Equal Housing Opportunity, Independently Owned & Operated, 181 Maplewood Avenue, Maplewood, NJ 07040. Office: 973-762-5400



continued on page 42



Fully Insured:  
Workers' Comp  
Liability

**WILBER'S  
PAINTING**  
&  
HOME IMPROVEMENTS  
Interior - Exterior

www.wilberspainting.com · Maplewood, NJ

**973-762-6333**

NJHIC#  
13VH06449500

**Geralyn's  
art studio**

103 Baker Street  
Maplewood Village

Call Geralyn  
at 973-275-1966  
or 862-205-9744  
to register  
for classes

Sign up for  
Summer Camp  
June 27 – Sept 2

ART & DANCE CAMP  
with Lydia Johnson Dance  
JULY 11–29

Adult Art  
Workshop  
Birthday  
Parties

Happy Hour  
Painting  
Adult  
Workshop

CLASSES DAILY  
MONDAY – SATURDAY  
FOR ALL AGES

VISITING ARTISTS WORKSHOP  
ART BIRTHDAY PARTIES

Cartooning with  
RUSSELL CHRISTIAN  
Monday evenings

NO EXPERIENCE  
NECESSARY

info@geralynsartstudio.com www.geralynsartstudio.com

**Summer  
Matters!**



**Matters**

M A G A Z I N E

Published June 27  
973-763-4900  
mattersmagazine.com



Natalie Polito, soprano, will sing in the Society of Musical Arts Tragic Lovers concert at Maplewood Middle School on June 5.

the theme “Tragic Lovers.” Come listen to music from Tchaikovsky’s *Romeo & Juliet*, Wagner’s *Tristan & Isolde* and Fauré’s *Pelléas & Mélisande*. Also on the program is acclaimed soprano Natalie Polito singing Mendelssohn’s “Infelice” and other sad songs. This event is made possible in part by grants from Investors Foundation and the New Jersey Arts Council. For details call 973-763-4939 or visit [soma.ar88.net](http://soma.ar88.net).

This year’s tour will include more than 67 artists, in studios, galleries and group exhibitions where artists will be happy to discuss their work. It’s a good time to begin or add to an art collection. The website [studiotoursoma.org](http://studiotoursoma.org) has an interactive map to make a custom self-guided tour. This free tour is sponsored by South Orange Department of Recreation & Cultural Affairs and 1978 Maplewood Art Center and many local businesses.

The 13<sup>th</sup> Annual **South Orange Maplewood Artists Studio Tour**, on June 5 from 11 a.m. to 5 p.m. is a tribute to the diversity of art and culture that flourishes in our communities.

Bedtime Math, along with the Crayon Initiative, will launch **The Great Crayon Cleanout** from June 6 through 10. Students at Marshall Elementary School in South Orange, and possibly other schools in the South Orange/Maplewood school district, will gather up used crayons, saving them from the landfill. Bedtime Math’s free kit will guide teachers and students through math exercises in which kids will count, sort and weigh crayons. Afterward the crayons will be shipped out to the Crayon Initiative, recycled into new ones and



The South Orange Maplewood Artists Studio Tour will take place on June 5 in studios, galleries and group exhibitions throughout Maplewood and South Orange.

Students at Marshall Elementary School will be gathering used crayons for the Great Crayon Cleanout June 6-10.

